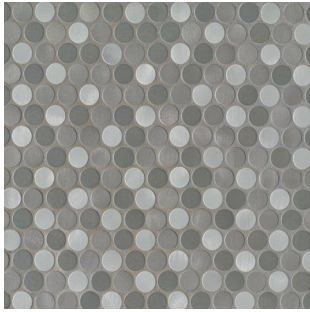
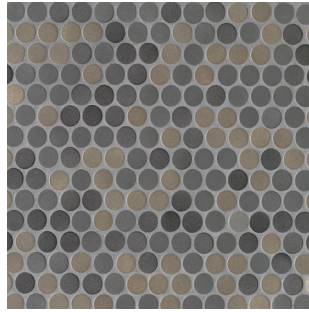


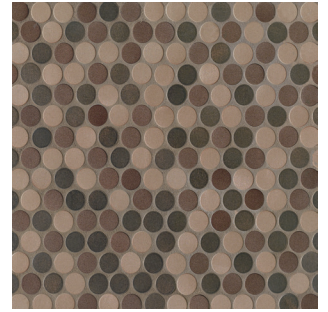
3/4" Rounds Blend - Matte/Brushed (11 3/4"x11 3/4" Sheet)



Silver - SIL
DECMONSIL34RMOB



Coal - COA
DECMONCOA34RMOB



Bronze - BRO
DECMONBRO34RMOB

3/4" Squares Blend - Matte/Brushed (12"x12" Sheet)



Silver - SIL
DECMONSIL34SMOB



Coal - COA
DECMONCOA34SMOB



Bronze - BRO
DECMONBRO34SMOB

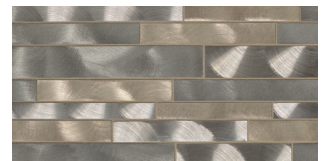
Large Linear Blend - Matte/Brushed (9"x15 3/4" Sheet)



Silver - SIL
DECMONSILLRLB



Coal - COA
DECMONCOALRLB



Bronze - BRO
DECMONBROLRLB

Large Linear Stone / Glass / Metal Blend - Gloss/Matte (9"x15 3/4" Sheet)



Silver Queen - SIQ
DECMONSIQLRLSGMB



Cathedral - CAT
DECMONCATLRLSGMB



Snow - SNO
DECMONSNOLRLSGMB



Rocky - ROC
DECMONROCLRLSGMB



Opera - OPE
DECMONOPELRLSGMB







Highland - HIG
DECMONHIGLRLSGMB

Montane

Decorative (Metal, Stone & Glass)

Photo Features 3/4" Rounds Blend in Silver.

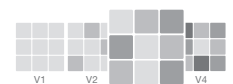
SIZING & PACKAGING

Type	Shape	Item Code	Size	Description	Pcs / Ctn	Sf / Ctn
Mosaic		DECMON***LRLB	9"x15 3/4" Sheet	Large Linear Blend - Matte/Brushed	11	10.87
		DECMON***LRLSGMB	9"x15 3/4" Sheet	Large Linear Stone / Glass / Metal Blend - Gloss/Matte	10	9.90
		DECMON***34RMOB	11 3/4"x11 3/4" Sheet	3/4 Rounds Blend - Matte/Brushed	11	10.65
		DECMON***34SMOB	12"x12" Sheet	3/4 Squares Blend - Matte/Brushed	11	11.00

ANSI TECHNICAL SPECIFICATIONS

	DCOF Acutest	Scratch Resistance MOHS	Breaking Strength ASTM# C648	Water Absorption ASTM# C373	Chemical Resistance ASTM# C650	Bond Strength A137.2-7.7	Thermal Shock ASTM# C484
Results	N/A	N/A	N/A	N/A	N/A	N/A	N/A

Shade Variation



V3-Moderate

APPLICATIONS

	Floors	Walls	Countertops	Shower Floors	Shower Walls	Pools/Spas
Residential		•				
Commercial		•				

LEGEND

- Product rated for Interior & Exterior use
- Product rated for Interior use only
- † May be suitable for Exterior Floors
- ∅ Applications & ANSI Technical Specifications do not apply
- * Special Order only

This product cannot be installed in high-heat areas or steam rooms. This product cannot be installed in exterior applications, wet areas, and/or high-heat areas.

All natural stone products must be sealed prior to grouting. Some products in this line may contain a copper, aluminum, and/or stainless steel veneer which may be subject to oxidation, rusting, scratching, and color changes over time. Do not use acidic or abrasive cleaners or cleaning pads. Use a non-sanded grout to prevent scratching. Some products in this line contain an underbody of ceramic tile and mesh which must be installed with premium modified neutral-colored thinset. Bedrosians recommends Laticrete 254 or comparable thinset. Some products in this line contain hollow pieces of metal that must be back-buttered and filled with thinset during installation. Do not use chemicals containing chlorine.

Images and product samples are representative of a product's potential characteristics. There is no guarantee that the sample product or images will 100% match the product received. Field, mosaic, and trim tile may not be an exact match. Tiles are subject to variations in color, shade, sizing, surface texture and finish. Installer must conduct a dry mock layout under proper lighting conditions prior to installation. It is the consumer's responsibility to inspect the product prior to installation to ensure satisfaction. Once installed, the product is deemed accepted. Check Manufacturer's specifications as some Mosaic tiles may not be appropriate for wet applications. Reference the most current TCNA Handbook, ANSI, Manufacturer's specifications, and Bedrosians Care & Maintenance guide for installation, outdoor use, care and maintenance information. Improper installation, application, use, care and maintenance voids warranty. We reserve the right to make changes to product specifications at any time without notice. Please visit www.bedrosians.com for current product information.

