

KAHAKAI™

Bedrosians®
TILE • STONE

oceanside
GLASS & TILE





THE SOIL
— & —
THE SEA

MATCHA GREEN TEA

Photo Features Kahakai™ Random Glass Mosaic in Deep Sea.

INSPIRATION

Kahakai™, meaning beach in Hawaiian, is inspired by the shimmering colors of the beautiful sands and reflections of Hawaii from sunrise to sunset. It has 10 color blends and four versatile patterns to evoke a casual elegance and will bring warmth and a little shine into your home or outdoor living space.



PARTNERSHIP

To create the Kahakai™ Collection, the product development design teams from Bedrosians® and Oceanside Glass & Tile worked closely to craft this new colorful glass collection. By bringing these two strong brands together, we've created a collection that is artistic, versatile and can be used in many applications, like backsplashes, feature walls, and even pools and spas. The Oceanside Glass & Tile brand speaks for itself. The beauty and quality of their products is stunning. We hope you love this collection as much as we do.

DURABILITY

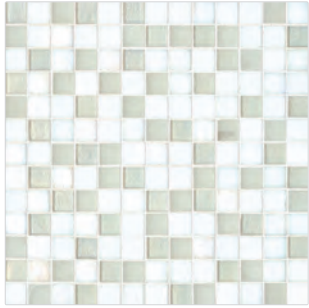
All Oceanside Glass & Tile is made primarily from sand, an abundant natural resource, with many colors containing recycled content that may include pre-consumer and/or post-consumer recycled bottle glass from curbside recycling programs.

Glass tile is an extremely strong building material that is impervious to water and freeze/thaw resistant. This long-lasting durability further adds to its sustainability.

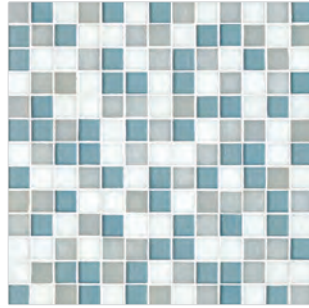


KAHAKAI™ Decorative (Glass)

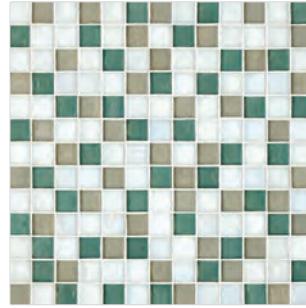
7/8"x7/8" Glass Mosaic (12 1/8"x12 1/8" Sheet)



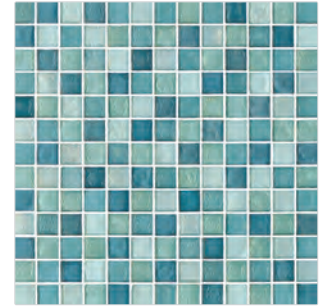
Coconut - COC
GLSKAHCOC11



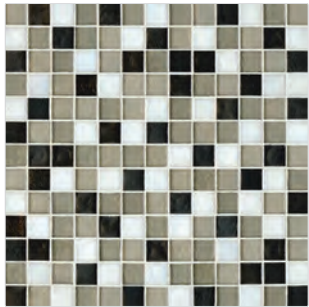
Moana - MOA
GLSKAHMOA11



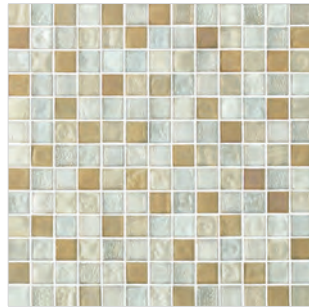
Rongo - RON
GLSKAHRON11



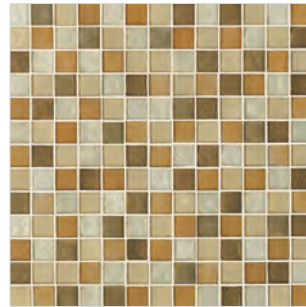
Reef - REE
GLSKAHREE11



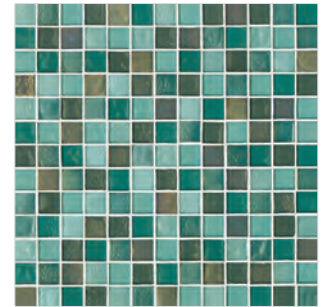
Tino - TIN
GLSKAHTIN11



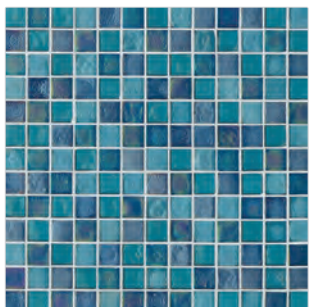
Sunrise - SUN
GLSKAHSUN11



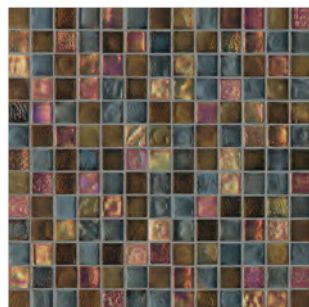
Sunset - SUS
GLSKAHCSUS11



Paradise - PAR
GLSKAHPAR11



Deepsea - DES
GLSKAHDES11

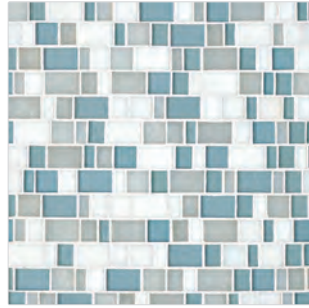


Lava - LAVA
GLSKAHLAVA11

Random Glass Mosaic (11 3/4"x11 1/4" Sheet)



Coconut - COC
GLSKAHCOCRAN



Moana - MOA
GLSKAHMOARAN



Rongo - RON
GLSKAHRONRAN



Reef - REE
GLSKAHREERAN



Tino - TIN
GLSKAHTINRAN



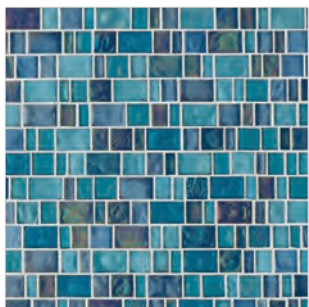
Sunrise - SUN
GLSKAHSUNRAN



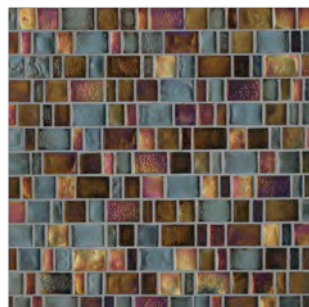
Sunset - SUS
GLSKAHSUSRAN



Paradise - PAR
GLSKAHPARRAN



Deepsea - DES
GLSKAHDESRRAN



Lava - LAVA
GLSKAHLAVARAN

Hexagon Glass Mosaic (11 7/8"x11 5/8" Sheet)



Coconut - COC
GLSKAHCOHEX



Moana - MOA
GLSKAHMOAHEX



Rongo - RON
GLSKAHRONHEX



Reef - REE
GLSKAHREEHEX



Tino - TIN
GLSKAHTINHEX



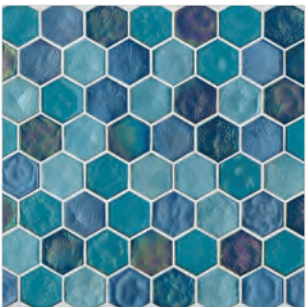
Sunrise - SUN
GLSKAHSUNHEX



Sunset - SUS
GLSKAHSUSHEX



Paradise - PAR
GLSKAHPARHEX



Deepsea - DES
GLSKAHDESHEX



Lava - LAVA
GLSKAHLAVAHEX

Linear Glass Mosaic (11 1/8"x11 7/8" Sheet)



Coconut - COC
GLSKAHCOCLNR



Moana - MOA
GLSKAHMOALNR



Rongo - RON
GLSKAHRONLNR



Reef - REE
GLSKAHREELNR



Tino - TIN
GLSKAHTINLNR



Sunrise - SUN
GLSKAHSUNLNR



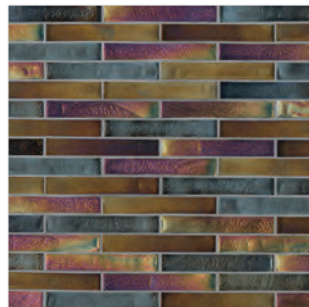
Sunset - SUS
GLSKAHSUSLNR



Paradise - PAR
GLSKAHPARLNR



Deepsea - DES
GLSKAHDESLNR







Lava - LAVA
GLSKAHLAVALNR



KAHAKAI™
Decorative (Glass)

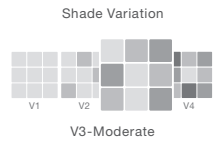
Photo Features Hexagon Glass Mosaic in Coconut.

SIZING & PACKAGING

Type	Shape	Item Code	Size	Description	Pcs / Ctn	Sf / Ctn
Mosaic		GLSKAH***11*	12 1/8"x12 1/8"	7/8"x7/8" Glass Mosaic	15	15.31
		GLSKAH***HEX*	11 7/8"x11 5/8"	Hexagon Glass Mosaic	10	9.54
		GLSKAH***LNR*	11 1/8"x11 7/8"	Linear Glass Mosaic	15	13.76
		GLSKAH***RAN*	11 3/4"x11 1/4"	Random Glass Mosaic	15	13.77

ANSI TECHNICAL SPECIFICATIONS

	DCOF Acutest	Scratch Resistance MOHS	Breaking Strength ASTM# C648	Water Absorption ASTM# C373	Chemical Resistance ASTM# C650	Bond Strength A137.2-7.7	Thermal Shock ASTM# C484
Results	≤ 0.42	N/A	≥ 350 lbf	< 0.5%	Unaffected	N/A	Unaffected



APPLICATIONS

	Floors (Bathrooms)	Walls	Countertops (Powder Room Only)	Shower Floors	Shower Walls	Pools/Spas
Residential	●	☐	●	●	☐	☐
Light Commercial		☐	●		☐	☐
Commercial		☐	●		☐	☐



LEGEND

- ☐ Product rated for Interior & Exterior use
- Product rated for Interior use only
- † May be suitable for Exterior Floors
- ∅ Applications & ANSI Technical Specifications do not apply
- * Special Order only

This product is paper-face mounted. Please follow Manufacturer's installation instructions.

Please follow Oceanside glass installation and cutting instructions, setting material recommendations and care and maintenance guidelines.

This product may be used on residential floors subject to soft-soled shoes and normal footwear traffic without heavy dirt.

Tiles that are 2x2 or smaller may be suitable for shower floors.

Images and product samples are representative of a product's potential characteristics. There is no guarantee that the sample product or images will 100% match the product received. Field, mosaic, and trim tile may not be an exact match. Tiles are subject to variations in color, shade, sizing, surface texture and finish. Installer must conduct a dry mock layout under proper lighting conditions prior to installation. It is the consumer's responsibility to inspect the product prior to installation to ensure satisfaction. Once installed, the product is deemed accepted. Check Manufacturer's specifications as some Mosaic tiles may not be appropriate for wet applications. Reference the most current TCNA Handbook, ANSI, Manufacturer's specifications, and Bedrosians Care & Maintenance guide for installation, outdoor use, care and maintenance information. Improper installation, application, use, care and maintenance voids warranty. We reserve the right to make changes to product specifications at any time without notice. Please visit www.bedrosians.com for current product information.





Cutting/Drilling

CUTTING

Oceanside Glasstile can be cut to meet jobsite dimensions with the use of a high-quality wet tile saw equipped with a continuous, smooth-rim, diamond glass tile blade such as:

- Alpha Professional Tools - Vetro
- Daltile - Daltool Glass Tile Blade
- Husqvarna - Superlok Glass+
- MK Diamond - MK 215GL or MK 215GL-XL
- Rodia - Glass Tile Blade
- Saw Master – Cheetah Series Glass Blade (Fine)
- World Diamond Source – Glass Tile Blade

NOTES:

- *To maintain cut quality, periodically dress the diamond blade with a dressing stone.*
- *To smooth cut tile edges, use a #120 lapidary stone (tile rub stone), PVA polishing pads or 220 silicon carbide sandpaper.*
- *Always use safety/personal protection equipment when cutting or drilling glass tile.*

WET CUTTING PAPER-FACED MOSAICS

To facilitate wet cutting, paper-faced mosaics must be removed from the paper and cut individually or the mounting paper must be protected from saw overspray. The following photos document a process, which can be used to facilitate wet cutting while minimizing water contact with the mounting paper.



Step 1 Cover the saw tray with a piece of 1/4" cement board. This will provide a continuous surface that supports the sheet during cutting and prevents mosaic pieces from falling into the tray's cutting channel.



Step 2 Adjust the blade height so the blade cuts through 1/2 of the cement board thickness.



Step 3 Cut another piece of 1/4" cement board to a square size that is larger than a sheet of mosaics. Apply a strip of self-adhesive, compressible, foam weather-strip to one edge of the cement board.



Step 4 With the saw turned off, place the mosaic sheet, paper side up, on the cement board covered saw and align the cut.



Step 5 Place the second piece of cement board on top of the mosaic sheet. Cover the portion of sheet that is to be installed (keeper) with the weather-strip side down and against the blade. The board will protect the mounting paper from saw over-spray.



Step 6 Place downward pressure on the top layer of cement board, turn the saw on and slowly proceed with cutting. The downward pressure should be sufficient to compress the weather-strip, preventing water from flowing under the board, and stabilize the mosaic tiles during cutting.



Step 7 Once cutting is complete, turn the saw off, carefully remove the top layer of cement board and quickly towel dry the mounting paper.



Step 8 Towel dry the back of the tile and install the sheet as normal.

NOTES:

- The above process should keep the mounting paper relatively dry during cutting. However, if a sheet becomes saturated, quickly lay it on a flat surface and allow it to completely dry before handling.
- For best results, towel dry the weather-strip between cuts.
- Replace the weather-strip when it no longer recovers its original shape after compression.

Glass mosaic tiles may also be removed from the sheet and wet cut individually or cut by hand using glass mosaic nippers.



DRILLING

Oceanside Glasstile can be drilled using a wet core diamond bit and a water swivel (central water feed).

Solid blocking for the anchoring of fixtures, such as shower doors and towel bars, must be installed prior to installing the tile substrate. The diameter of all drilled holes must be large enough to allow the fastener to pass through the tile and substrate without making contact.



Step 1 Attach the water swivel (central water feed) and wet core diamond bit to the drill. Connect the water swivel to a water source and adjust the water flow to a slow trickle. Constant, slow water flow will reduce chipping by cooling and lubricating the drill bit.



Step 2 Using a template to stabilize the drill bit, begin slowly drilling with light pressure.



Step 3 Gradually increase drilling speed and maintain steady pressure until the desired depth is achieved.



Grout Selection

OCEANSIDE GLASSTILE GROUT SELECTION GUIDE

The following chart shows all Oceanside Glasstile product lines, sub-divided into translucent and opaque color categories, cross-referenced with grout and application types (wet or dry). Use this chart to determine which type or types of grout are recommended for your installation.

PRODUCT LINE	TILE COLOR TYPE	CEMENT-BASED SANDED	CEMENT-BASED UNSANDED	HIGH PERFORMANCE CEMENT-BASED	URETHANE-BASED	
		All Applications	All Applications	All Applications	Wet	Dry
Blue	TRANSLUCENT	●	●	●		●
	OPAQUE	●	●	●	●	●
Casa California	TRANSLUCENT	●		●		●
	OPAQUE	●		●	●	●
Elevations	TRANSLUCENT	●		●		●
	OPAQUE	●		●	●	●
Facets	TRANSLUCENT	●		●		●
	OPAQUE	●		●	●	●
Geologie	TRANSLUCENT	●		●		●
	OPAQUE	●		●	●	●
Haiku	TRANSLUCENT	●		●		●
	OPAQUE	●		●	●	●
Harmonia	TRANSLUCENT	●	●	●		●
	OPAQUE	●	●	●	●	●
Kahakai (Muse)	TRANSLUCENT	●	●	●		●
	OPAQUE	●	●	●	●	●
Tessera	TRANSLUCENT	●		●		●
	OPAQUE	●		●	●	●

CEMENT-BASED SANDED GROUT

A factory prepared mixture of cement, graded sand and other ingredients, which produces a dense, uniformly colored material. Generally specified for grouts 1/8" and larger. Some examples include:

- CUSTOM BUILDING PRODUCTS: Polyblend Sanded Tile grout
- HYDROMENT: Sanded Tile Grout
- LATICRETE: 1500 Sanded Grout
- MAPEI: Keracolor S
- TEC: AccuColor Premium Sanded Tile Grout

CEMENT-BASED UNSANDED GROUT

A factory prepared mixture of cement and other ingredients, which produces a dense, uniformly colored material. Generally specified for grout joints 1/8" and smaller. Some examples include:

- CUSTOM BUILDING PRODUCTS: Polyblend Unsanded Tile grout
- HYDROMENT: Unsanded Tile Grout
- LATICRETE: 1600 Unsanded Grout
- MAPEI: Keracolor U
- TEC: AccuColor Premium Unsanded Tile Grout

HIGH PERFORMANCE CEMENT-BASED GROUT

A factory prepared mixture of cement, fine aggregate, and other ingredients, including a redispersible, latex/polymer powder (to which only water is added at the job site), which produces a dense, uniformly colored material. These products will generally possess improved performance characteristics, such as; color consistency, efflorescence resistance and stain resistance. While these grouts look and feel like cement-based sanded grout, they are generally recommended for use in grout joints between 1/16" and 1/2". This versatility makes them particularly well suited for our mosaic product lines. Some examples include:

- CUSTOM BUILDING PRODUCTS: Prism SureColor Grout
- LATICRETE: PermaColor
- MAPEI: Ultracolor Plus
- TEC: AccuColor XT

URETHANE-BASED GROUT

A factory prepared mixture of urethane, colored aggregate and other ingredients, which air-cure to produce a dense uniformly colored material. Some example include:

- BOSTIK: Dimension - Reflective, Pre-Mixed Urethane Grout
- BOSTIK: TruColor Pre-Mixed Grout
- CUSTOM BUILDING PRODUCTS: Pre-Mixed Grout
- STARQUARTZ: QuartzLock2

NOTE: Oceanside Glasstile does not recommend urethane-based grout with our translucent tile when installed in wet locations.

POOL AND WATER FEATURE INSTALLATION

These instructions are provided as a general guideline for the installation of Oceanside Glass & Tile tape-faced mosaic, paper-faced mosaic and unmounted cast glass tile over concrete tanks. Some installations require a more detailed specification. An experienced, professional tile installer, who is familiar with the following procedures, should perform the work. Please read and understand these instructions before beginning any work.

For detailed product use information, including ASTM test results and recommended applications, please refer to www.installogt.com. Tiles with any edge longer than 5" or trim tile with any edge longer than 2.5" are not recommended for use in pools and water features. For additional information, contact Oceanside Glass & Tile Installation Support at 877-648-8222 or techsupport@glasstile.com.

MATERIAL INSPECTION

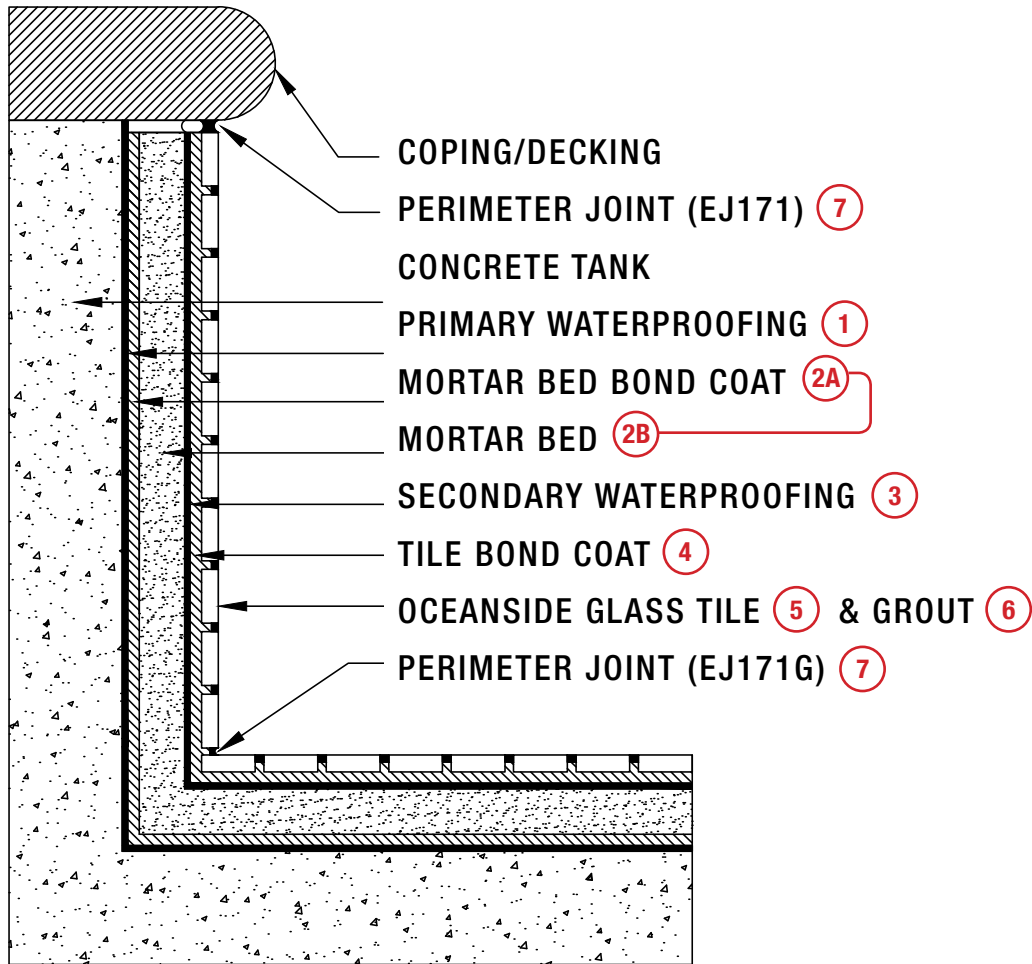
Oceanside Glass & Tile products are handmade. Variation in color, shade, tone and size is normal. In many cases, there will be folds, wrinkles and bubbles in the glass. These surface characteristics are inherent to the cast glass manufacturing process and should be expected. Upon delivery open and inspect each box of tile. The owner or owner's representative is responsible for determining the acceptability of the product prior to installation as well as approving the first five square feet of installed tile prior to the tile installer proceeding with the installation.

- **Mosaic Tile** - verify sheet-to-sheet color consistency by first comparing each sheet, from the backside, to one another. Next, compare the face of the sheets by laying them adjacent to one another and comparing the visible portion (edge) of the mosaic tiles.
- **Unmounted Tile** - verify color acceptability prior to installation. Translucent tile should be inspected and compared to one another on a white background. Prior to or during installation, blend the entire order to promote a visually consistent installation.

No adjustments will be made after installation

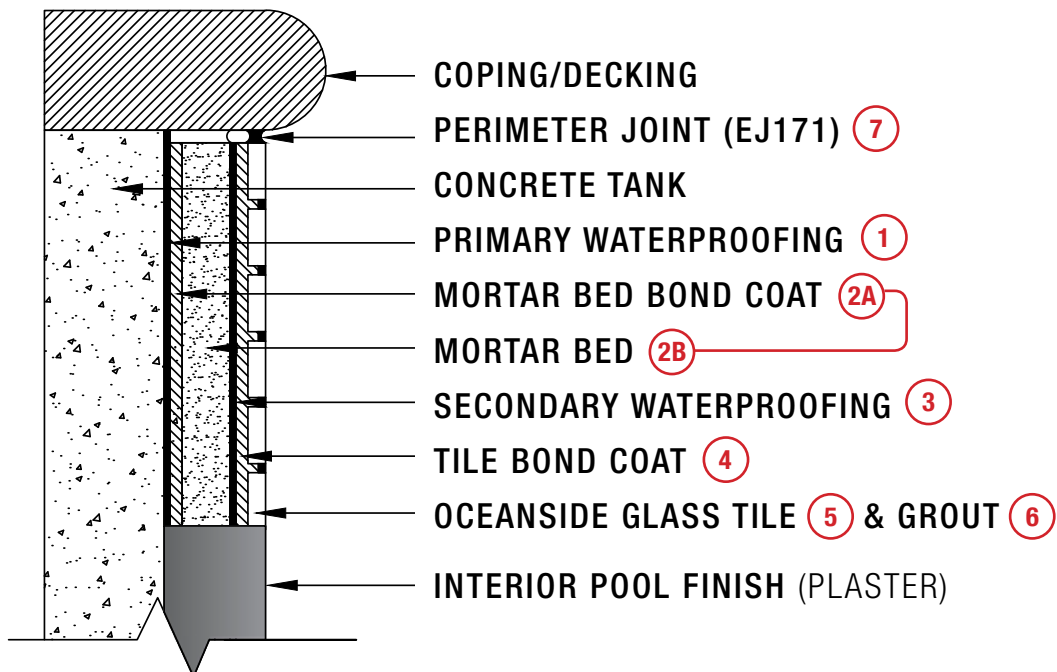
FULL COVERAGE

Full Coverage applications are those completely covered with tile.



PARTIAL COVERAGE

Partial Coverage applications are those in which the tile is used in conjunction with another pool finish (e.g. plaster).

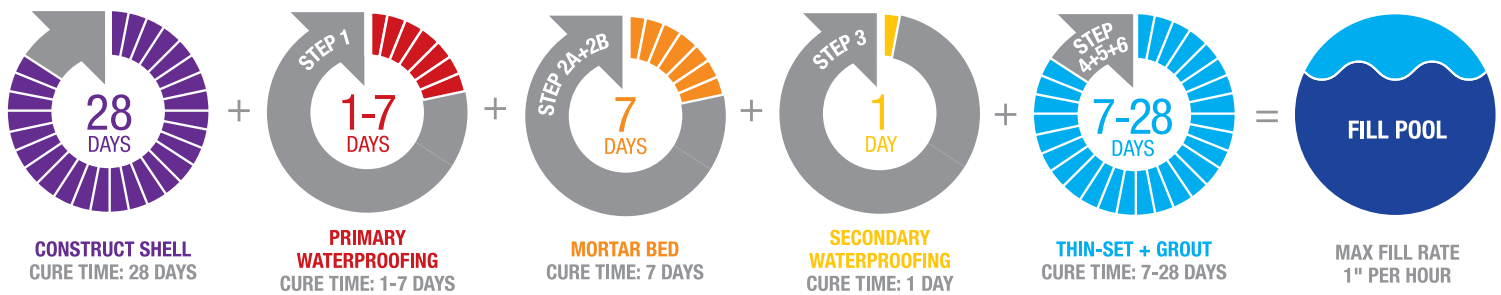


PROJECT REQUIREMENTS

- Pool tank construction must be reinforced concrete meeting the cast concrete standards described in the American Concrete Institute's ACI 318 and/or sprayed concrete standards described in ACI 506R-16 and the American Shotcrete Association's (ASA) Position Papers #1-6
- Defects in the concrete tank (e.g. cracks, active water leaks, unsound concrete, etc.) must be repaired prior to the commencement of tile work
- Concrete tank surface must be free of grease, oil, wax or other coatings; pressure wash if necessary
- Cement mortar beds must be cured a minimum of 7 days prior to glass tile installation
- The ideal working temperature for most thin-set and grout products is between 50°F and 90°F. Tile installations must be protected during installation and curing from direct sunlight, excessive heat, wind, rain and freezing temperatures

CURE TIMES

The following cure times are based on industry standards, manufacturer's directions and average climatic conditions. Manufacturer's directions will vary and should always be followed. Stated cure times begin at the completion of each stage of construction and the time needed to execute each stage is not included in the chart below. Tile installations must be protected during curing from direct sunlight, excessive heat, wind, rain and freezing temperatures.



All submerged applications must be cured a minimum of 21 days prior to submersion or heavy water use, unless otherwise specified by the thin-set and grout manufacturer. If a shorter cure time is required, contact Installation Support for specific recommendations.

MOVEMENT JOINTS

Install movement provisions according to the current edition of the "TCNA Handbook For Ceramic, Glass & Stone Tile Installation" method EJ171. A flexible sealant, recommended for submerged applications, is required between the tile and all restraining abutments (e.g. the decking/coping), at all inside corners and directly over any joints in the concrete tank. For glass tile, in-field movement joints are required at a maximum spacing of 8' on center. For porcelain or ceramic installations, in-field movement joints are required at a maximum spacing of 12' on center.

RECOMMENDED INSTALLATION PRODUCTS

1 PRIMARY WATERPROOFING

- AQUORON CPSP
- Basecrete BC Pool Shell Plus
- Miracote MiraPrime Aqua-Blok XL
- Multicoat Vapor Shield
- Valcon Industries Restructor

WARNING: The use of hydrophobic, crystalline concrete waterproofing additives or treatments may result in bond loss of subsequent tile assembly layers

2A MORTAR BED BOND COAT

- Thin-set mortar meeting one of the following, ANSI A118.4, ANSI A118.15, ISO C2 or better.

2B MORTAR BED (Nominal Thickness - Walls 3/4", Floors 1 1/4")

- 4:1 Site Mix (by volume) – 4 parts ASTM C-144 sand to 1 part ASTM C-150 portland cement mixed with water or an acrylic/latex cement-mortar additive.

NOTE: Adding an acrylic or latex polymer cement-mortar additive to a site mixed mortar will increase the Mortar Bed's strength, moisture resistance and resistance to freeze-thaw damage. DO NOT add lime to the cement-mortar.

- Custom Building Products Thick Bed Mortar mixed with Thin Set Mortar Additive
- Bostik Mud-In-A-Bag mixed with 425 Acrylic Latex Admixture
- Laticrete 3701 Fortified Mortar mixed with water
- MAPEI 4 to 1 Mud Bed Mix mixed with Planicrete AC
- Miracote Mortar Bed 2000 mixed with water
- TEC Floor Mud mixed with Acrylbond Acrylic Mortar Additive

3 SECONDARY WATERPROOFING

For either Partial or Full Coverage tile applications

- Basecrete (white or gray)
- Bostik Ultra-Set Advanced
- MAPEI Mapelastix 315
- Miracote Membrane C (white or gray)
- TEC Triple Flex
- Valcon Industries Flexcrete (white or gray)

For Full Coverage tile applications only

- Bostik GoldPlus
- Custom Building Products RedGard
- Laticrete Hydroban
- MAPEI AquaDefense
- TEC HydraFlex

4 TILE BOND COAT

Due to the translucent nature of glass tile, the color of the thin-set (tile bond coat) will affect the appearance of the installed tile. We recommend the use of specific white thin-sets, some mixed with a specific latex admix (see list below). However, these products will vary in their degree of whiteness and color consistency. Confirm the thin-set color is acceptable prior to installation. For projects that require multiple bags of thin-set, select a color controlled product or confirm bag-to-bag color consistency.

- Bostik Glassmate* mixed with 425 Acrylic Latex Admixture
- Custom Building Products Premium Glass Tile Thin-Set Mortar*
- Laticrete Glass Tile Adhesive*
- MAPEI Adesilex P10 Bright White Thin-Set Mortar*† mixed with Keraply Mortar Additive
- TEC Super Flex Ultra Premium Thin-Set Mortar

**The thin-set mortars marked with an asterisk are bright white and specifically manufactured for use with translucent glass tile.*

† This product is color controlled for bag-to-bag color consistency

5 OCEANSIDE GLASS TILE

For detailed product use information, including ASTM test data and recommended applications, please refer to the “Recommended Applications” document, which is available for download at www.installogt.com.

NOTE: Tiles with any edge longer than 5” or trim tile with any edge longer than 2.5” are not recommended for use in pools and water features.

6 GROUT

In all pool & water feature applications, cement-based, sanded grouts are compatible with our products (will not scratch the tile). However, in some specific instances, unsanded grout, urethane-based grout or epoxy grouts may also be an option. For additional information, contact Oceanside Glass & Tile Installation Support or refer to the Oceanside Glass & Tile “Grout Selection Guide”, which is available for download at www.installogt.com.

NOTE: Blue, green and red grouts may not be appropriate for submerged applications; consult grout manufacturer for specific use recommendations and limitations.

Cement-Based Sanded Grout

- Ardex FL Sanded Grout
- Bostik Ceramic Tile Grout
- Bostik Hydroment Vivid
- Custom Building Products Polyblend Sanded Grout
- Custom Building Products Prism SureColor Grout
- Laticrete 1500 Sanded Grout
- Laticrete PermaColor or PermaColor Select Grout
- MAPEI Keracolor S
- MAPEI Ultracolor Plus FA
- TEC AccuColor Premium Sanded Grout
- TEC Power Grout

7 PERIMETER & MOVEMENT JOINT SEALANT

- Custom Building Products Commercial 100% Silicone Sealant
- Laticrete Latasil 100% Silicone Sealant with 9118 Primer
- MAPEI Mapesil T 100% Silicone Sealant
- TEC Accucolor 100 100% Silicone Sealant

PAPER-FACED MOSAIC INSTALLATION

For mosaics with a side longer than 2", use a 1/4" x 1/4" square-notch trowel. For all other mosaic products, use a 3/16" x 1/4" v-notch trowel.



STEP 1

To initiate the bond coat, use the flat side of a trowel and firmly apply thin-set to the substrate.



STEP 2

To establish the proper depth of the setting bed, use a notch trowel to apply additional thin-set and comb full notches in one direction.



STEP 3

Use the flat side of the trowel to flatten the notches and achieve a smooth, consistent thin-set setting bed.



STEP 4

Apply mosaic sheets to the thin-set setting bed, paper side out, with light, even pressure. Periodically, check thin-set for skinning (slight drying). If skinning occurs, remove thin-set and reapply.



STEP 5

To achieve the flattest possible surface, lightly tap the sheets with a wooden beating block and a finish hammer. To unify sheet transitions, tap from one sheet to the next.



STEP 6

After 15-30 minutes, (floors can be removed sooner) lightly wet the paper. Keep the paper wet by wiping with a damp sponge several times over a 5-10 minute period. After the paper has absorbed the water, the glue will release.



STEP 7

Peel the paper from the tile starting at the corner. Removing the paper while the setting material is still fresh allows for individual tile adjustment and re-inspection of color consistency.



STEP 8

Straighten individual tiles and press-in any pieces that have not achieved 100% contact. To eliminate the sheet pattern pay particular attention to sheet transitions.



STEP 9

After a full 24 hours (some installations may require extended cure times) use water and a nylon scrub brush to remove residual glue from the tile. Clean rinse and towel dry.



STEP 10

Grout application and cleaning process will vary based on the type and brand of grout. Refer to grout manufacturer's instructions for details.



STEP 11

Allow grout to set-up (firm) and smooth finish with a damp sponge. After approximately 2 hours remove grout haze with a lightly damp sponge.



STEP 12

For final removal of grout haze, polish with a clean, soft cloth.



STEP 13

Seal cement-based grout and natural stone with Oceancare High Performance Penetrating Sealer.



STEP 14

Apply sealer with spray bottle, paint brush or sponge applicator.



STEP 15

Allow sealer to penetrate for 1-3 minutes. Buff unabsorbed sealer from the surface with a clean cloth.

Note - A video demonstration of "How to Install Paper Face Mounted Glass Tile Mosaic" is available at www.installogt.com.

UNMOUNTED TILE INSTALLATION



To initiate the bond coat, use the flat side of a trowel and firmly apply thin-set to the substrate.



To establish the proper depth of the setting bed, use a 1/4"x 1/4" square-notch trowel to apply additional thin-set and comb full notches in one direction.



Use the flat side of the trowel to flatten the notches and achieve a smooth, consistent thin-set setting bed.



Thoroughly clean the back of each tile using a clean, dry cloth. Never wet the tile prior to setting.



Back-butter each tile using additional thin-set. Prior to setting translucent tile, check the face to verify 100% coverage has been achieved.



Press the tile into the fresh setting bed using firm, even pressure. Remove excess setting material from the edges and space a minimum of 1/8" between tiles and all abutting surfaces.



After a full 24 hours, remove spacers and apply grout. Grout application and cleaning process will vary based on the type and brand of grout. Refer to grout manufacturer's instructions for details.



Allow grout to set-up (firm) and smooth finish with a damp sponge. After approximately 2 hours remove grout haze with a lightly damp sponge.



For final removal of grout haze, polish with a clean, soft cloth.



Seal cement-based grout and natural stone with Oceancare High Performance Penetrating Sealer.



Apply sealer with spray bottle, paint brush or sponge applicator.



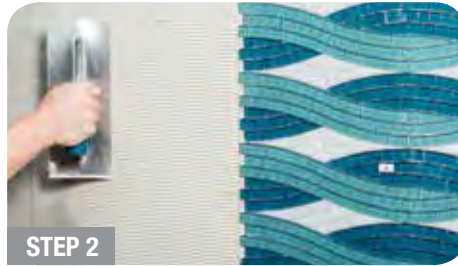
Allow sealer to penetrate for 1-3 minutes. Buff unabsorbed sealer from the surface with a clean cloth.

FILM-FACED MOSAIC INSTALLATION (Mosaics equal to or greater than 1/4" nominal thickness)

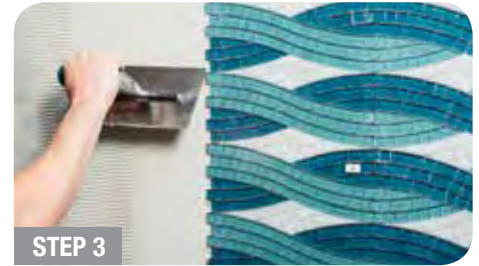
For mosaics with a side longer than 2", use a 1/4" x 1/4" square-notch trowel. For all other mosaic products, use a 3/16" x 1/4" v-notch trowel.



To initiate the bond coat, use the flat side of a trowel and firmly apply thin-set to the substrate.



To establish the proper depth of the setting bed, use a notch trowel to apply additional thin-set and comb full notches in one direction.



Use the flat side of the trowel to flatten the notches and achieve a smooth, consistent thin-set setting bed.



Apply mosaic sheets to the thin-set setting bed, plastic film side out, with light, even pressure. Periodically, check thin-set for skinning (slight drying). If skinning occurs, remove thin-set and reapply.



To achieve the flattest possible surface, lightly tap the sheets with a wooden beating block and a finish hammer. To unify sheet transitions, tap from one sheet to the next.



After a full 24 hours (some installations may require extended cure times) starting at the corner; peel the plastic from the tile.



If necessary, remove excess thin-set from the grout joints with a razor knife prior to grouting.



Grout application and cleaning process will vary based on the type and brand of grout. Refer to grout manufacturer's instructions for details.



Allow grout to set-up (firm) and smooth finish with a damp sponge. After approximately 2 hours remove grout haze with a lightly damp sponge.



For final removal of grout haze, polish with a clean, soft cloth.



Seal cement-based grout and natural stone with OceanCare High Performance Penetrating Sealer.



Apply sealer with spray bottle, paint brush or sponge applicator.



Allow sealer to penetrate for 1-3 minutes. Buff unabsorbed sealer from the surface with a clean cloth.

WET CUTTING MOUNTED MOSAIC TILE

Oceanside Glass & Tile products can be cut to meet jobsite dimensions with the use of a high-quality wet tile saw equipped with a continuous, smooth-rim, diamond glass tile blade. The cutting process detailed below can be used with face-mounted mosaics to fully support the tile, reduce chipping and protect the mounting system from saw overspray. Additional information and a video demonstration of wet cutting face mounted mosaics is available at www.installgt.com.



STEP 1

Cover the saw tray with a piece of 1/4" cement board. This provides continuous support for the sheet and prevents pieces from falling into the tray's cutting channel.



STEP 2

Adjust the blade height so the blade cuts through half of the cement board thickness.



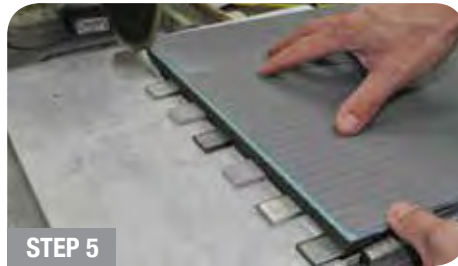
STEP 3

Cut another piece of 1/4" cement board that is larger than a sheet of mosaics. Apply a strip of self-adhesive foam weather-strip to one edge of the cement board.



STEP 4

With the saw turned off, place the mosaic sheet, paper side up, on the cement board covered saw tray and align the cut.



STEP 5

Place the second piece of cement board on top of the mosaic sheet. Cover the portion of the sheet that is to be installed (keeper) with the weather-strip side down and against the blade. The board will protect the sheet from saw overspray.



STEP 6

Place downward pressure on the top layer of cement board, turn the saw on and cut slowly. The pressure should be sufficient enough to compress the weather-strip and prevent water from flowing under the board.



STEP 7

Once cutting is complete, turn the saw off, carefully remove the top layer of cement board and quickly towel dry the mounting paper.



STEP 8

Towel dry the back of the sheet and install as normal.

RECOMMENDED GLASS TILE BLADES

- Alpha Professional Tools - Vetro
- Husqvarna - Superlok Glass+
- Lackmond - Pro Series Glass Tile Blade
- MK Diamond - MK 215GL or MK 215GL-XL
- Montolit - CPV
- Rockstar Diamond - G Series Blade
- Rodia - Glass Tile Blade
- Saw Master - Cheetah Series Glass Blade (Fine)
- World Diamond Source - Pro Series Glass Tile Blade

Note - To maintain cut quality, periodically dress the diamond blade with a dressing stone.

WARNING: DO NOT DRY CUT TILE. Dry cutting causes excessive chipping/cracking and can produce harmful dust.

DRILLING

Oceanside Glass & Tile products can be drilled using a diamond core bit designed for drilling dense materials (e.g. glass or granite). Use sufficient water to keep the bit cool and lubricated during drilling. The diameter of all drilled holes must be large enough to allow a fastener to pass through the tile and substrate without making contact. Detailed information regarding drilling is available at www.installgt.com.

MAINTENANCE

Proper care and maintenance is crucial to the long-term appearance and performance of pools and water features. The following information outlines recommended products and techniques for the maintenance of most pool and exterior tile and is general in nature. For detailed water balance and maintenance information refer to the Oceancare Products **"Pool Tile Maintenance Guide"**.

NEW INSTALLATIONS

- 1 Seal grout with **High Performance Penetrating Sealer** (prevents staining)
- 2 Protect tile & grout with **Glass & Tile Shield** (inhibits calcium build-up)
- 3 Clean tile & grout regularly with **All Purpose Cleaner & Degreaser**
- 4 Every 6-12 months clean tile & grout with **Calcium Releaser** and reapply **Glass & Tile Shield**



EXISTING

- 1 Remove calcium deposits with **Calcium Releaser** (heavy deposits may need to be media blasted)
- 2 If needed, restore faded/etched tile with **Pool Tile Restorer**
- 3 Protect tile & grout with **Glass & Tile Shield** (inhibits calcium build-up)
- 4 Clean tile & grout regularly with **All Purpose Cleaner & Degreaser**
- 5 Every 6-12 months clean tile & grout with **Calcium Releaser** and reapply **Glass & Tile Shield**



PREVENTING CALCIUM BUILD-UP

To inhibit the bond of calcium deposits, apply Oceancare **Glass & Tile Shield** to new and/or clean pool tile. Tile treated with Glass & Tile Shield will be easier to maintain and most calcium deposits will be removed with water and a nylon scrub brush, eliminating the need for additional calcium cleaners. For optimal results, regularly brush the tile and reapply **Glass & Tile Shield** every 6 months.

GENERAL CLEANING

To remove waterline scum and grime, apply Oceancare **All Purpose Cleaner & Degreaser** to the tile and scrub with a nylon bristle scrub brush or a 3M White or Blue nylon scrub pad. To remove mineral scale and calcium deposits, apply Oceancare **Calcium Releaser** to the tile surface and scrub with a nylon bristle scrub brush or a 3M White or Blue nylon scrub pad. **DO NOT** use pumice stones, steel bristle brushes, abrasive or acidic cleaners.



WARNING: Certain acids will damage tile glaze and iridescent glass tile. Care should be taken to protect tile surfaces when using acids in the pool finishing process and when adding acid to the pool water. DO NOT allow products that contain hydrofluoric, hydrochloric, muriatic or phosphoric acid to come in direct contact with the tile. In the case of accidental contact, neutralize immediately with baking soda and water (1lb: 3 gallon).



Substrate Variations

(Installing Glass Tile Next to Thicker Materials)

When installing Oceanside Glasstile adjacent to thicker materials, with the intention of the two tiles finishing in the same plane (flush), the substrate must be brought up to a level such that the glass tile can be installed with the recommended amount of thin-set. This should be accomplished in one of three ways depending on the amount of variation between the uninstalled glass tile and installed surrounding material.

NOTE: For detailed information regarding recommended thin-sets and the tile installation process, please refer to the Oceanside Glasstile Installation Guide, which is available in the Installation section of our website www.glasstile.com.

FOR VARIATION BETWEEN 1/8" - 1/4"

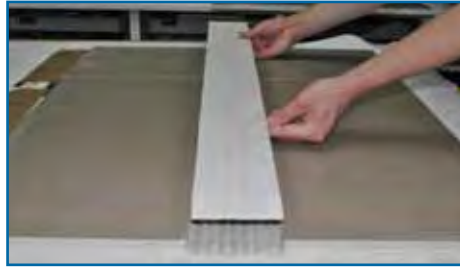


Step 1 Apply a build-up layer of a recommended thin-set, screed to the desired substrate depth and cure for a minimum of 48 hours.



Step 2 After the build-up layer of thin-set has cured for a minimum of 48 hours, install and grout the tile per the Oceanside Glasstile Installation Guide.

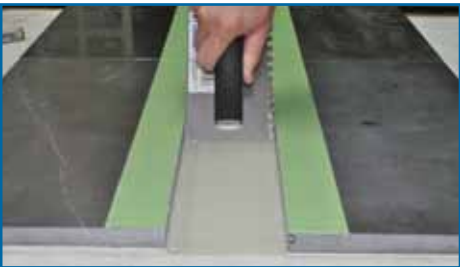
FOR VARIATIONS BETWEEN 1/4" - 3/4"



Step 1 Using a recommended thin-set, install a piece of 1/4" or 1/2" cement board. Use a notch trowel size and cement board thickness that will render the desired substrate depth. Cure a minimum of 24 hours.

Step 2 After the installed cement board layer has cured for a minimum of 24 hours, install and grout the tile per the Oceanside Glasstile Installation Guide.

FOR VARIATIONS BETWEEN 3/4" - 1 1/2"



Step 1 Apply a thin layer (bond-coat) of a recommended thin-set.

Step 2 While the bond-coat is still tacky, apply a cement mortar bed (4:1 sand & cement mixture per ANSI A108.1B). Screed the cement mortar bed to the desired substrate depth and cure a minimum of 7 days.

Step 3 After the cement mortar bed has cured a minimum of 7 days, install and grout the tile per the Oceanside Glasstile Installation Guide.

POOL TILE MAINTENANCE GUIDE



What's in your pool?

Most people don't think about the chemicals they use to service their pool tile. However, many common pool tile cleaners contain toxic chemicals and aggressive acids, which can damage tile and pose serious health risks to users. At Oceancare we believe maintenance products should do more than remove calcium or prevent stains. With our low VOC sealers and all natural, biodegradable, non-toxic, acid free cleaners, Oceancare Products combine industry-leading performance with the ultimate peace of mind.



Proper care and maintenance is crucial to the long-term appearance and performance of pools and water features. The following information outlines recommended products and techniques for the cleaning, sealing and protection of most pool and exterior tile and is general in nature.

WATER BALANCE

Start-Up: Source water should be tested prior to filling and adjusted per industry guidelines such as the National Plasterers Council's "Swimming Pool Start-Up Procedures", available at www.npconline.org. Fill water with low calcium hardness, low pH and/or low alkalinity can be corrosive to plaster, grout, thin-set mortar, concrete, natural stone and metals.

Ongoing Maintenance: Proper water balance and chemistry is critical for controlling calcium deposits (mineral scale). Water balance is calculated via the Langelier Saturation Index (LSI). The water's LSI is a numeric expression of the water's balance and takes into consideration multiple factors. When water is balanced the LSI equals zero and variation between 0.0 and 0.5 is considered acceptable. LSI levels greater than 0.5 may lead to water cloudiness and accelerated mineral scaling. Negative LSI levels may lead to corrosion of cement-based materials (e.g. plaster & grout) and metal surfaces. Pool water chemistry should be measured and maintained by a pool-maintenance professional.

SEALING POROUS MATERIALS

Sealers are beneficial for natural stone, masonry (i.e. coping) and cement-based grouts. To protect porous materials and ease maintenance, seal installations with either [Oceancare High Performance Penetrating Sealer](#) (natural look) or [Oceancare High Performance Enhancing Sealer](#) (color enriching).

PREVENTING CALCIUM BUILD-UP

To inhibit the bond of calcium deposits, apply [Oceancare Glass & Tile Shield](#) to new and/or clean pool tile. Protected tile surfaces will be easier to maintain and most calcium deposits can be removed with regular brushing or scrubbing, dramatically reducing or even eliminating the need for chemical cleaners or aggressive cleaning methods. For optimum protection, apply [Glass & Tile Shield](#) to pool tile every 6 months.

GENERAL MAINTENANCE

Pool tile should be brushed or scrubbed as part of a weekly pool maintenance program. Avoid the use of pumice stones or wire brushes, which can damage tile surfaces.

To remove waterline scum and grime, apply [Oceancare All Purpose Cleaner & Degreaser](#) to the tile surface and scrub with a nylon bristle scrub brush or a 3M White or Blue nylon scrub pad.

To remove mineral scale and calcium deposits, apply [Oceancare Calcium Releaser](#) to the tile surface and scrub with a nylon bristle scrub brush or a 3M White or Blue nylon scrub pad. Do not use abrasive or acidic cleaners.

MEDIA-BLASTING

In cases of heavy calcium deposits, mineral scale or neglected tile, media-blasting may be necessary. Media-blasting is a process in which an abrasive material is pressurized and shot at a surface to remove heavy deposits. This is generally performed by pool tile cleaning specialists through the use of portable media-blasting equipment. An array of blasting media is available, ranging from glass bead (aggressive) to baking soda (mild). Generally, baking soda or similar hardness blasting media (i.e. kieserite) is aggressive enough to remove scale but is safe for tile (including glass tile). As with all cleaning procedures, this process should be tested in an inconspicuous area to ensure the results will meet your expectations and not damage the tile surface.

Once media-blasting is complete, pool tile installations should be sealed, protected and regularly maintained with Oceancare Products.

WARNING Certain acids will damage tile glaze and iridescent glass tile. Care should be taken to protect tile surfaces when using acids in the pool finishing process and when adding acid to the pool water. DO NOT allow products that contain hydrofluoric, hydrochloric, muriatic or phosphoric acid to come in direct contact with the tile. In the case of accidental contact, neutralize immediately with baking soda and water (1lb: 3 gallons).

NOTE: Always wear personal protection equipment, follow instructions for product use and protect surrounding surfaces when using cleaning or sealing products. Test all products in an inconspicuous area for desired effect.

SEALING, PROTECTION & MAINTENANCE SYSTEMS FOR GLASS & PORCELAIN TILE

SEALING, PROTECTION & MAINTENANCE SYSTEMS FOR NATURAL STONE

While each Oceancare Product can be used on its own, they are most effective when used together

as part of a maintenance system. Select the appropriate system from the options below.

NEW TILE

1 Seal grout with
High Performance Penetrating Sealer
(prevents staining)



2 Protect tile & grout with
Glass & Tile Shield
(inhibits calcium build-up)



3 Clean tile & grout regularly with
All Purpose Cleaner & Degreaser



4 Every 6-12 months clean tile & grout with
Calcium Releaser and reapply
Glass & Tile Shield



EXISTING TILE

1 Remove calcium deposits with
Calcium Releaser
(heavy deposits may need to be media blasted)



2 If needed, restore faded/etched tile with
Pool Tile Restorer



3 Protect tile & grout with
Glass & Tile Shield
(inhibits calcium build-up)



4 Clean tile & grout regularly with
All Purpose Cleaner & Degreaser



5 Every 6-12 months clean tile & grout with
Calcium Releaser and reapply
Glass & Tile Shield



NEW STONE

1 Seal stone & grout with
High Performance Penetrating Sealer or
High Performance Enhancing Sealer



2 Protect stone & grout with
Glass & Tile Shield
(inhibits calcium build-up)



3 Clean stone & grout regularly with
All Purpose Cleaner & Degreaser



4 Every 6-12 months clean stone & grout with
Calcium Releaser* and reapply
Glass & Tile Shield



EXISTING STONE

1 Clean stone & grout with
Intensive Stone Cleaner



2 Seal stone & grout with
High Performance Penetrating Sealer or
High Performance Enhancing Sealer



3 Protect stone & grout with
Glass & Tile Shield
(inhibits calcium build-up)



4 Clean stone & grout regularly with
All Purpose Cleaner & Degreaser



5 Every 6-12 months clean stone & grout with
Calcium Releaser* and reapply
Glass & Tile Shield



* Calcium Releaser may damage some stone. Use only if necessary.

UNPROTECTED TILE

CLEANED AND PROTECTED WITH OCEANCARE



Calcium Releaser



A non-toxic, acid free cleaner that removes calcium deposits and efflorescence from pool tile, shower doors and plumbing fixtures. Calcium deposits are removed through the use of advanced acid-mimic technology, which targets mineral deposits without acid damage to glass, porcelain and ceramic tile surfaces or most metal finishes.

*Available sizes / part number / coverage**

Quart Trigger Spray / 128109 / 75 sq. ft.

Gallon / 96101 / 300 sq. ft.

- Removes calcium deposits and efflorescence
- Acid free – Non-toxic
- Use with porcelain, ceramic and glass
- Does not affect pool pH

Glass & Tile Shield



An invisible, non-toxic, easy to apply surface protectant that inhibits the bond of calcium and other material deposits. Protected surfaces are easier to maintain and most deposits are removed with light brushing or scrubbing. This eliminates the need for abrasive or acidic cleaners and keeps your surfaces looking new, longer. Use on ceramic tile, porcelain tile, glass tile, natural stone. Excellent for pools, ponds and rock water features.

*Available sizes / part number / coverage**

Quart Trigger Spray / 128577 / 75 sq. ft.

Gallon / 128578 / 300 sq. ft.

- Prevents calcium and mineral build-up
- Reduces maintenance on tile, shower doors & more
- Excellent for pools and water features
- Invisible, non-toxic & easy to apply
- Reapply every 6-12 months

High Performance Penetrating Sealer Hybrid Carrier Technology®



Penetrates and protects grout, natural stone and other porous masonry materials. Forms an invisible, no-sheen barrier that is resistant to water and oil and provides superior stain protection. Low residue formula is specifically designed to be easier and faster to apply than traditional penetrating sealers. May be applied to dry, damp, cured or uncured grout or natural stone (seriously...immediately after grouting!).

- Maintains natural look
- Seal the same day you grout
- Low residue – Low odor – Low VOC
- Interior and exterior use
- Reseal every 2-3 years

Available sizes / part number / coverage*

Quart / 100006 / 125-625 sq. ft.

Gallon / 100007 / 500-2500 sq. ft.



High Performance Enhancing Sealer Hybrid Carrier Technology®



A low VOC, all-in-one color enhancer and penetrating sealer for both interior and exterior applications. Intensifies and enriches the color of natural stone, grout, concrete and other porous masonry materials. Forms a barrier that is resistant to water and oil and provides superior stain protection.

- Enriches natural stone color
- Excellent for travertine pavers
- Superior stain protection
- UV resistant for exterior use
- No acrylic solids to clog pool filters
- Reseal every 3-5 years

Available sizes / part number / coverage*

Quart / 104970 / 50-375 sq. ft.

Gallon / 104971 / 200-1500 sq. ft.



*Actual coverages may vary depending on surface texture, porosity and rate of application

All Purpose Cleaner & Degreaser



A 100% natural, plant-derived, citrus-based cleaner that quickly cuts through body oil, sunscreen and makeup, which can accumulate on pool waterlines. Designed for use with all types of pool tile and vinyl pool liners.

- Removes waterline grease and grime
- 100% Natural-Biodegradable-Non-toxic
- Will not promote algae growth or affect pool pH

*Available sizes / part number / coverage**

Quart Trigger Spray / 96099 / 200-400 sq. ft.

Pool Tile Restorer



An easy to apply, non-toxic, low VOC surface treatment that adds color and luster to old, faded or etched pool tile. Effective on most pool tile types including ceramic, porcelain and glass tile. Can be applied after acid washing or media-blasting to restore damaged or etched tile surfaces. Safe for use in pools, overspray or runoff that gets into pool water will not adversely affect pool water chemistry, clog filters or damage equipment.

- Adds color and luster to old, faded or etched pool tile
- Low to medium sheen
- Use on ceramic, porcelain or glass tile
- UV stable - will not yellow, crack or peel
- Low VOC - Easy to apply - Non-toxic

*Available sizes / part number / coverage**

Quart Trigger Spray / 140673 / 100-400 sq. ft.

Intensive Stone Cleaner Concentrate



A concentrated, acid-free, non-toxic, biodegradable, intensive cleaner designed for periodic use on natural stone surfaces. Cuts through years worth of heavy soil to restore natural stone surfaces to their original beauty. Use at maximum strength (1:4) for heavy-duty cleaning or make over 7 gallons of cleaning solution (1:30).

- Restoration cleaner for natural stone and grout
- Cuts through heavy soil and grease
- Biodegradable – Acid free – Non-toxic
- Makes up to 7 gallons of cleaning solution

*Available sizes / part number / coverage**

Quart / 111141 / 400-2400 sq. ft.



**Actual coverages may vary depending on surface texture, porosity and rate of application*