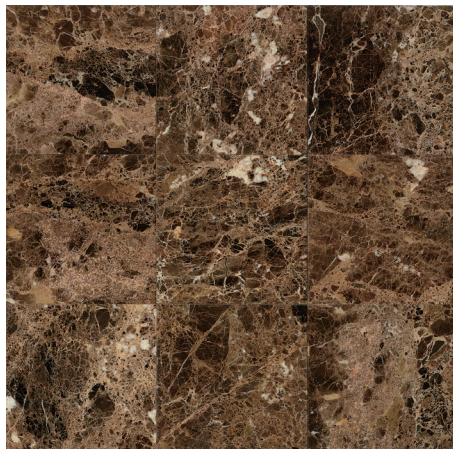
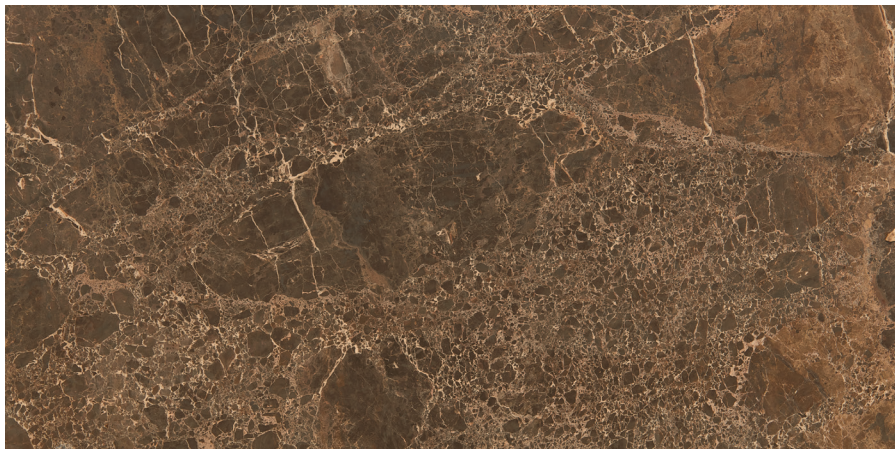


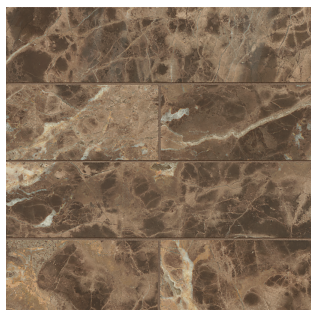
Available Sizes



MRBEMPDRK1212P - 12"x12" Polished
MRBEMPDRK1224P - 12"x24" Polished
MRBEMPDRK1818P - 18"x18" Polished
MRBEMPDRK2424P - 24"x24" Polished



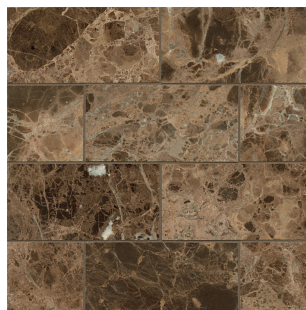
MRBEMPDRKSLAB2P - 2 cm Slab Polished
MRBEMPDRKSLAB3P - 3 cm Slab Polished



MRBEMPDRK0312H
3"x12" - Honed



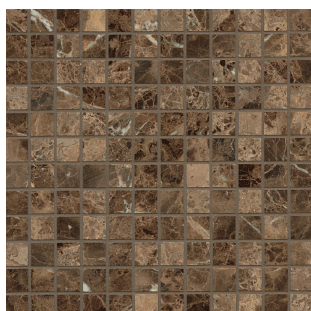
MRBEMPDRK0306H
3"x6" - Honed



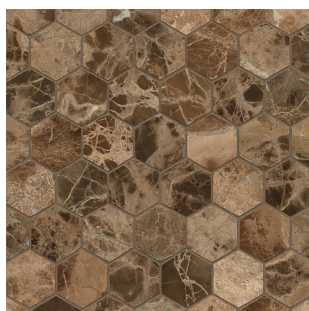
MRBEMPDRK0306P
3"x6" - Polished



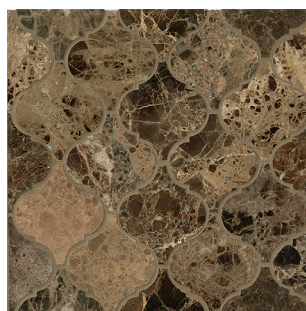
MRBEMPDRK0404T
4"x4" - Tumbled



MRBEMPDRK0101P
1"x1" Mosaic - Polished
(12"x12" Sheet)



MRBEMPDRKHEX
2" Hexagon Mosaic - Polished
(12"x12" Sheet)



MRBEMPDRKARB-P
Arabesque Mosaic - Polished
(12 1/4"x13 1/4" Sheet)



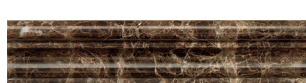
MRBEMPDRKCHE
Chevron Mosaic - Polished
(12"x12" Sheet)



MRBEMPDRKLNRR
Random Linear Mosaic - Polished
(12 1/2"x16" Sheet)



MRBEMPDRKCHANDRA-P
3"x12" Chandra Crown Molding - Polished



MRBEMPDRKCHAIR
2"x12" Chair Rail - Polished



MRBEMPDRKCANE
9/16"x3/4"x12" Cane - Polished



Emperador Dark Natural Stone (Marble)

Photo Features Marble 3" x 6" Field Tile - Honed, 3" x 12" Field Tile - Honed and 3" x 12" Chandra Crown Molding - Polished.

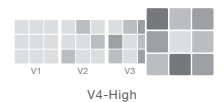
SIZING & PACKAGING

Type	Shape	Item Code	Size	Description	Pcs / Ctn	Sf / Ctn
Field		MRBEMPDRK0306H	3"x6"	Field Tile - Honed	-	-
		MRBEMPDRK0306P	3"x6"	Field Tile - Polished	-	-
		MRBEMPDRK0312H	3"x12"	Field Tile - Honed	-	-
		MRBEMPDRK0404T	4"x4"	Field Tile - Tumbled	-	-
		MRBEMPDRK1212P	12"x12"	Field Tile - Polished	-	-
		MRBEMPDRK1818P	18"x18"	Field Tile - Polished	-	-
		MRBEMPDRK1224P	12"x24"	Field Tile - Polished	-	-
		MRBEMPDRK2424P	24"x24"	Field Tile - Polished	-	-
Trim		MRBEMPDRKCANE	9/16"x3/4"x12"	Cane - Polished	-	-
		MRBEMPDRKCHAIR	2"x12"	Chair Rail - Polished	-	-
		MRBEMPDRKCHANDRA-P	3"x12"	Chandra Crown Molding - Polished	-	-
Mosaic		MRBEMPDRK0101P	12"x12" Sheet	1"x1" Mosaic - Polished	-	-
		MRBEMPDRKHEX	12"x12" Sheet	2" Hexagon Mosaic - Polished	-	-
		MRBEMPDRKCHE	12"x12" Sheet	Chevron Mosaic - Polished	-	-
		MRBEMPDRKARB-P	12 1/4"x13 1/4" Sheet	Arabesque Mosaic - Polished	-	-
		MRBEMPDRKLNR	12 1/2"x16" Sheet	Random Linear Mosaic - Polished	-	-
Slab		MRBEMPDRKSLAB2P	2 cm	Slab - Polished	-	-
		MRBEMPDRKSLAB3P	3 cm	Slab - Polished	-	-

APPLICATIONS

	Floors (Textured Only)	Walls	Countertops	Shower Floors (Textured & Small Mosaics Only)	Shower Walls	Pools/Spas
Residential	● †	■	■	● †	■	
Light Commercial	● †	■	■	● †	■	
Commercial	● †	■	■	● †	■	

Shade Variation



LEGEND

- Product rated for Interior & Exterior use
- Product rated for Interior use only
- May be suitable for Exterior Floors
- Applications & ANSI Technical Specifications do not apply
- Special Order only



Made in Spain

† The TCNA does not rate products for exterior floors. Project specifier must determine product suitability for exterior floor applications by evaluating specific project conditions, type of use, traffic, drainage, expected contaminants (such as water, oil, grease, etc.), wear, maintenance, and manufacturer's specifications and guidelines. Use caution--product may not be suitable for pool decks or ramps. No polished tiles; only textured surfaces may be suitable.

Images and product samples are representative of a product's potential characteristics. There is no guarantee that the sample product or images will 100% match the product received. Field, mosaic, and trim tile may not be an exact match. Tiles are subject to variations in color, shade, size, surface texture and finish. Prior to installation, installer must blend tiles from several different boxes to achieve an even distribution of color range. Installer must conduct a dry mock layout under proper lighting conditions prior to installation. It is the consumer's responsibility to inspect the product prior to installation to ensure satisfaction. Once installed, the product is deemed accepted. Check Manufacturer's specifications as some Mosaic tiles may not be appropriate for wet applications. Reference the most current TCNA Handbook, ANSI, Manufacturer's specifications, and Bedrosians Care & Maintenance guide for installation, outdoor use, care and maintenance information. Improper installation, application, use, care and maintenance voids warranty. We reserve the right to make changes to product specifications at any time without notice. Please visit www.bedrosians.com for current product information.

