

Field Tile Sizes



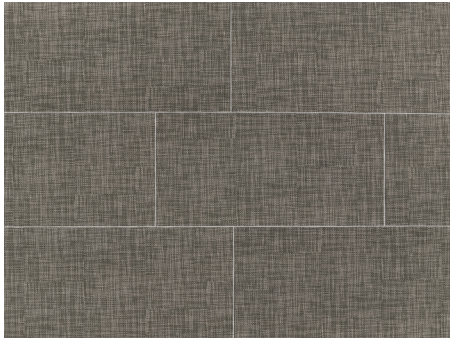
White - W
TCRDAG36W - 12"x24" Matte



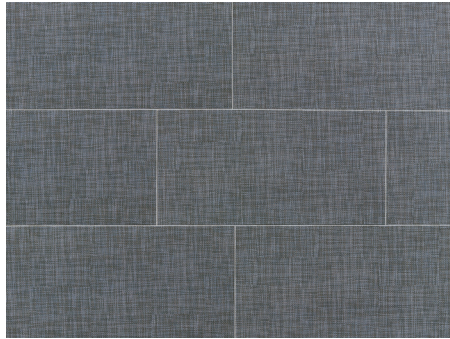
Silver - S
TCRDAG36S - 12"x24" Matte



Taupe - T
TCRDAG36T - 12"x24" Matte



Gray - G
TCRDAG36G - 12"x24" Matte

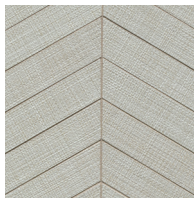


Denimun - D
TCRDAG36D - 12"x24" Matte

2"x6" Chevron Mosaic - Matte (9 1/2"x11 3/4" Sheet)



White - W
TCRDAGCHVW



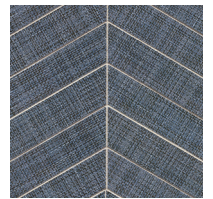
Silver - S
TCRDAGCHVS



Taupe - T
TCRDAGCHVT



Gray - G
TCRDAGCHVG



Denimun - D
TCRDAGCHVD

2"x2" Hexagon Mosaic - Matte (12"x12" Sheet)



White - W
TCRDAG221HEXW



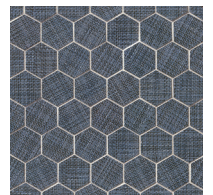
Silver - S
TCRDAG221HEXS



Taupe - T
TCRDAG221HEXT



Gray - G
TCRDAG221HEXG



Denimun - D
TCRDAG221HEXD



Dagny Fabrique

Glazed Porcelain

Photo Features 12"x24" Field Tile - Matte in Silver.

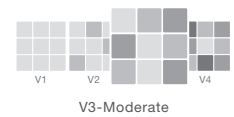
SIZING & PACKAGING

Type	Shape	Item Code	Size	Description	Pcs / Ctn	Sf / Ctn
Field		TCRDAG36•	12"x24"	Field Tile - Matte	9	18.00
Trim		TCRDAGS324•	3"x24"	Surface Bullnose - Matte	26	-
Mosaic		TCRDAGCHV•	9 1/2"x11 3/4" Sheet	2"x6" Chevron Mosaic - Matte	14	-
		TCRDAG221HEX•	12"x12" Sheet	2"x2" Hexagon Mosaic - Matte	12	-

ANSI TECHNICAL SPECIFICATIONS

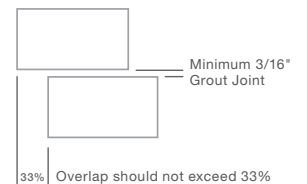
	DCOF Acutest	PEI Rating ASTM# C1027	Frost Resistant ASTM# C1026	Scratch Resistance MOHS	Breaking Strength ASTM# C648	Water Absorption ASTM# C373	Chemical Resistance ASTM# C650
Results	N/A	4	Unaffected	7	≥ 500 lbf	≤ 0.50%	Unaffected

Shade Variation



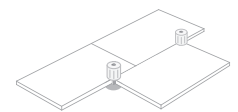
APPLICATIONS

	Floors	Walls	Countertops	Shower Floors	Shower Walls	Pools/Spas
Residential	•	◻	◻		◻	
Light Commercial	•	◻	◻		◻	
Commercial		◻	◻		◻	



LEGEND

- ◻ Product rated for Interior & Exterior use
- Product rated for Interior use only
- * Special Order only
- ∅ Applications & ANSI Technical Specifications do not apply



Use of a leveling system during installation is strongly recommended

Images and product samples are representative of a product's potential characteristics. There is no guarantee that the sample product or images will 100% match the product received. Field and trim tile may not be an exact match. We reserve the right to make changes to product specifications at any time without notice. Tiles are subject to variations in color, shade, sizing, surface texture and finish. Prior to installation, installer must blend tiles from several different boxes to achieve an even distribution of color range. Installer must conduct a dry mock layout under proper lighting conditions prior to installation. It is the consumer's responsibility to inspect the product prior to installation to ensure satisfaction. Once installed, the product is deemed accepted. Reference the most current TCNA Handbook, ANSI, manufacturer's specifications, and the Bedrosians Care & Maintenance guide for installation, outdoor use, care and maintenance information. Improper installation, application, and/or use voids warranty. Please visit www.bedrosians.com for current product information.

